

# THE SALUKI





# THE FIVE ESSENTIALS

- **TYPE**
- **BALANCE**
- **STYLE**
- **SOUNDNESS**
- **CONDITION**



# Breed Standard

HEAD long, narrow

SKULL moderately wide between ears; not domed

EYES dark to hazel, bright; large, oval; not prominent

STOP not pronounced

NOSE black or liver

TEETH strong, level

SMOOTH VARIETY: There is no feathering

CHEST deep, moderately narrow

FORELEGS straight; long from elbow to knee

FEET length moderate; strong, supple;  
toes long, well-arched, not splayed; not  
cat-footed; well-feathered between toes

COAT smooth; texture soft silky; slight  
feather on legs; feather back of thighs  
and on shoulders sometimes,  
texture slightly wooly

APPEARANCE: Graceful and symmetrical with impression of great speed  
and endurance coupled with strength and activity. Expression dignified,  
gentle with deep, faithful far-seeing eyes

EARS long, hanging close to skull; long silky hair

NECK long, supple, well-muscled

SHOULDERS sloping, set well-back;  
well-muscled without coarseness

BACK fairly broad

LOIN muscles slightly arched

TAIL long, low-set; carried in curve;  
well-feathered on underside  
hair long, silky; not bushy

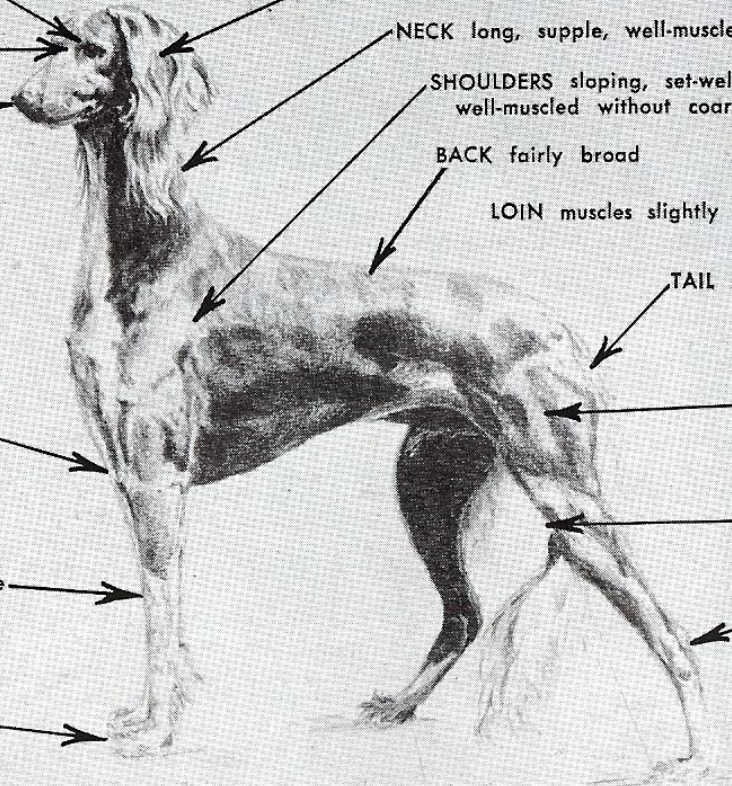
HINDQUARTERS strong; hip  
bones set well apart

STIFLE moderately bent

HOCKS low to ground

COLORS: White, cream, fawn, golden, red  
grizzle and tan tricolor (white, black  
and tan), and black and tan

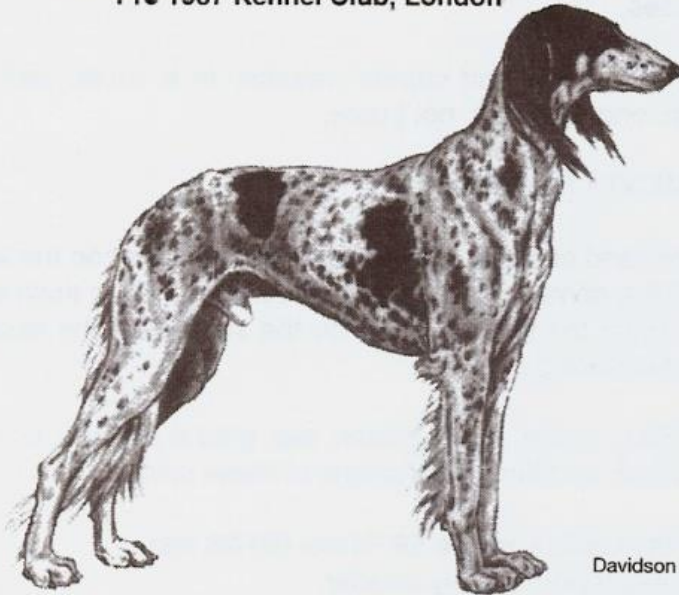
HEIGHT: males 23" to 28";  
females may be considerably smaller





## SALUKI OR GAZELLE HOUND

Pre 1987 Kennel Club, London



Davidson

# ANKC Breed Standard

**GENERAL APPEARANCE** - The whole appearance of this breed should give an impression of grace and symmetry and of great speed and endurance coupled with strength and activity to enable it to kill gazelle or other quarry over deep sand or rocky mountain. The expression should be dignified and gentle with deep, faithful, farseeing eyes.

**CHARACTERISTICS** - (Not detailed.)

**TEMPERAMENT** - (Not detailed.)

**HEAD AND SKULL** - Head long and narrow; skull moderately broad; the stop not pronounced. the whole showing

# ANKC Breed Standard

**HEAD AND SKULL** - Head long and narrow; skull moderately wide between ears, not domed, the stop not pronounced, the whole showing great quality. Nose black or liver.

**EYES** - Dark to hazel and bright, large and oval, but not prominent.

**EARS** - Long and mobile, covered with long silky hair; hanging close to the skull.

**MOUTH** - Teeth strong and level.

**NECK** - Long, supple and well muscled.

**FOREQUARTERS** - Shoulders sloping and set well back, well muscled without being coarse. The chest deep and moderately narrow. The forelegs straight and long from the elbow to the knee.

**BODY** - Back fairly broad, muscles slightly arched over the loin.

**HINDQUARTERS** - Strong, hip bones set wide apart, and stifle moderately bent, hocks low to the ground, showing galloping and jumping power.

# ANKC Breed Standard

**FEET** - Of moderate length, toes long, and well arched, not splayed out, but at the same time not cat footed; the whole being strong and supple and well feathered between the toes.

**TAIL** - Long, set on low and carried naturally in a curve, well feathered on the underside with long silky hair, not bushy.

**GAIT/MOVEMENT** - (Not detailed.)

**COAT** - Smooth and of a soft silky texture; slight feather on the legs; feather at the back of the thighs; sometimes with slight woolly feather on thigh and shoulders. (In the Smooth variety the points should be the same with the exception of the coat which has no feathering.)

**COLOUR** - White, cream, fawn, golden, red, grizzle and tan, tricolour (white, black and tan) and black and tan, or variations of these colours.

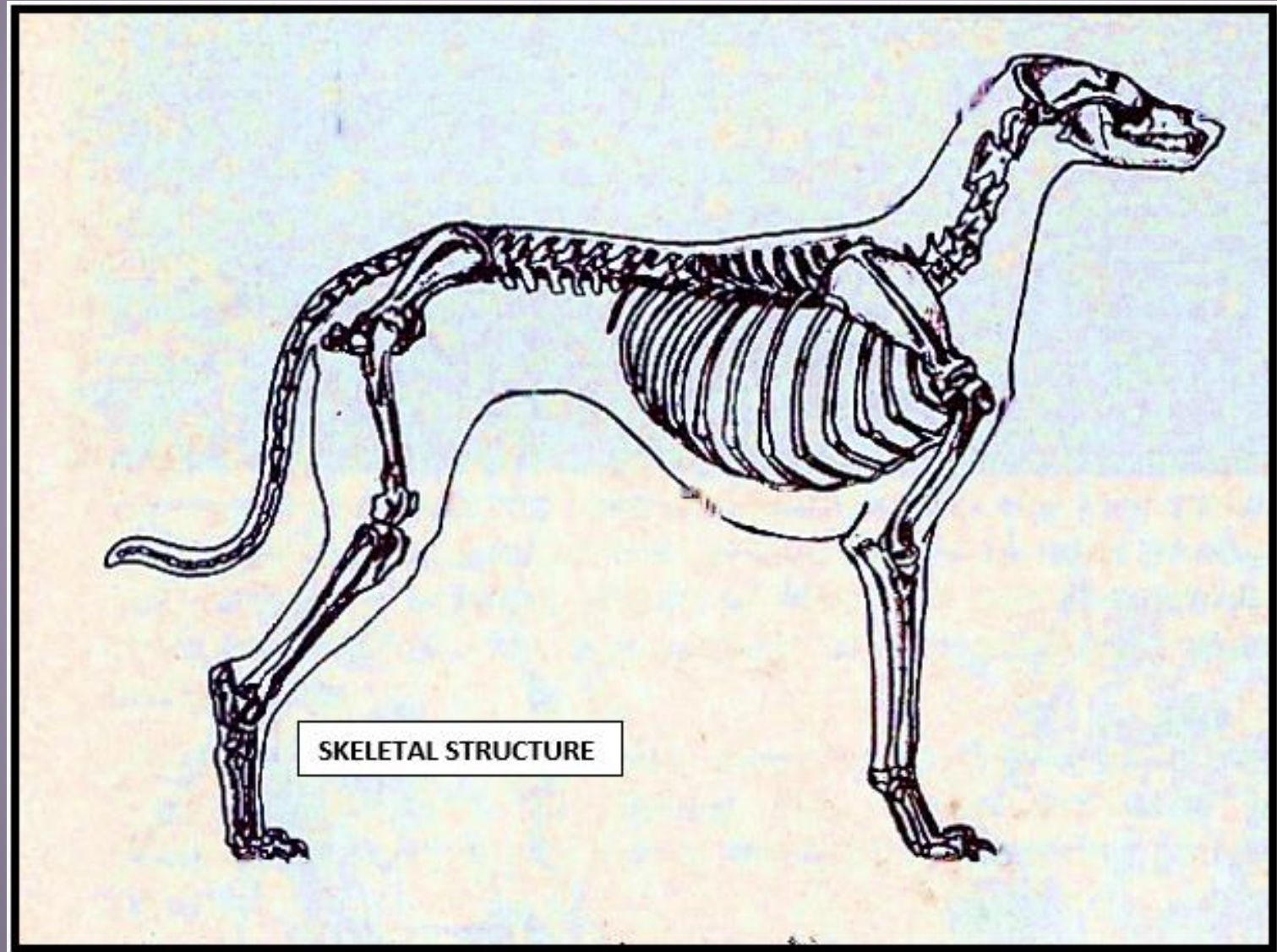
**SIZE** - Height should average 58-71 cm (23-28 ins).  
Bitches proportionately smaller.

**FAULTS** - Any departure from the foregoing points should be considered a fault and the seriousness with which the fault should be regarded should be in exact proportion to its degree.

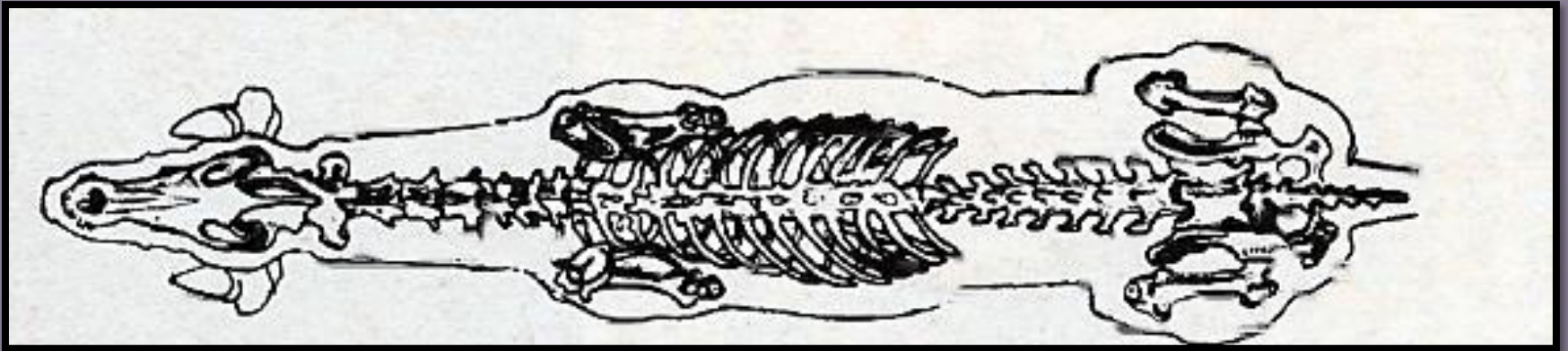
**NOTE** - Male animals should have two apparently normal testicles fully descended into the scrotum.



# The SALUKI Skeletal Structure

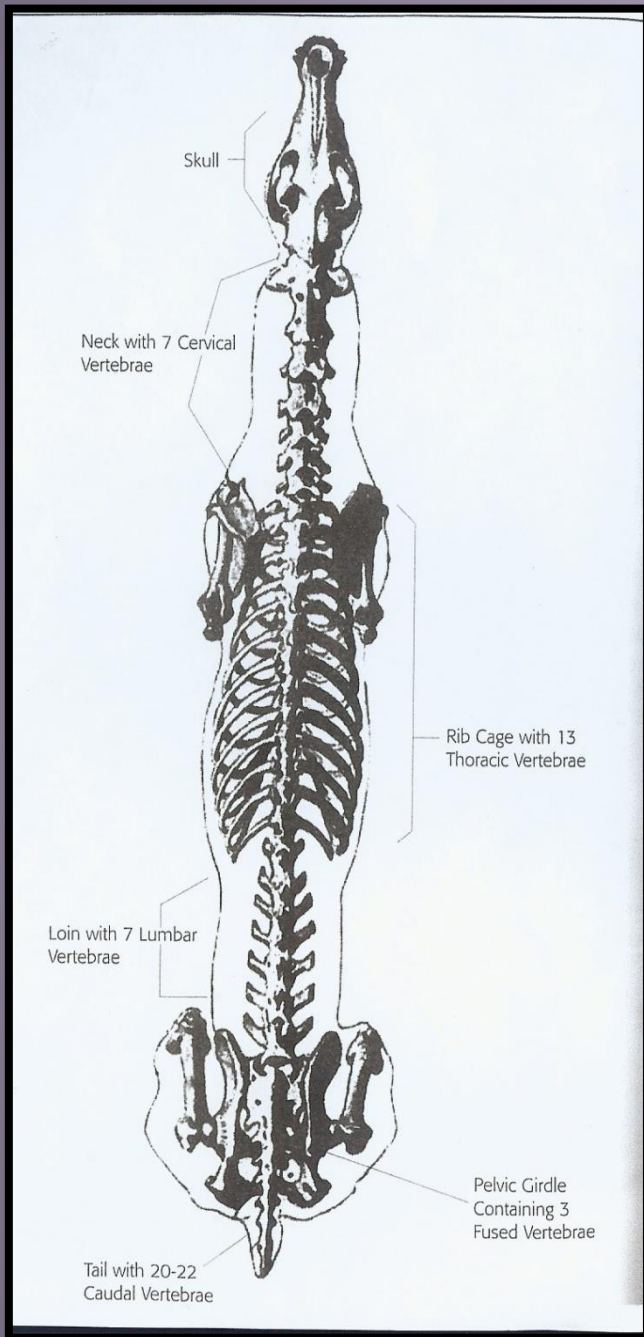


# From above





# Skeleton for Double Suspension Gallop



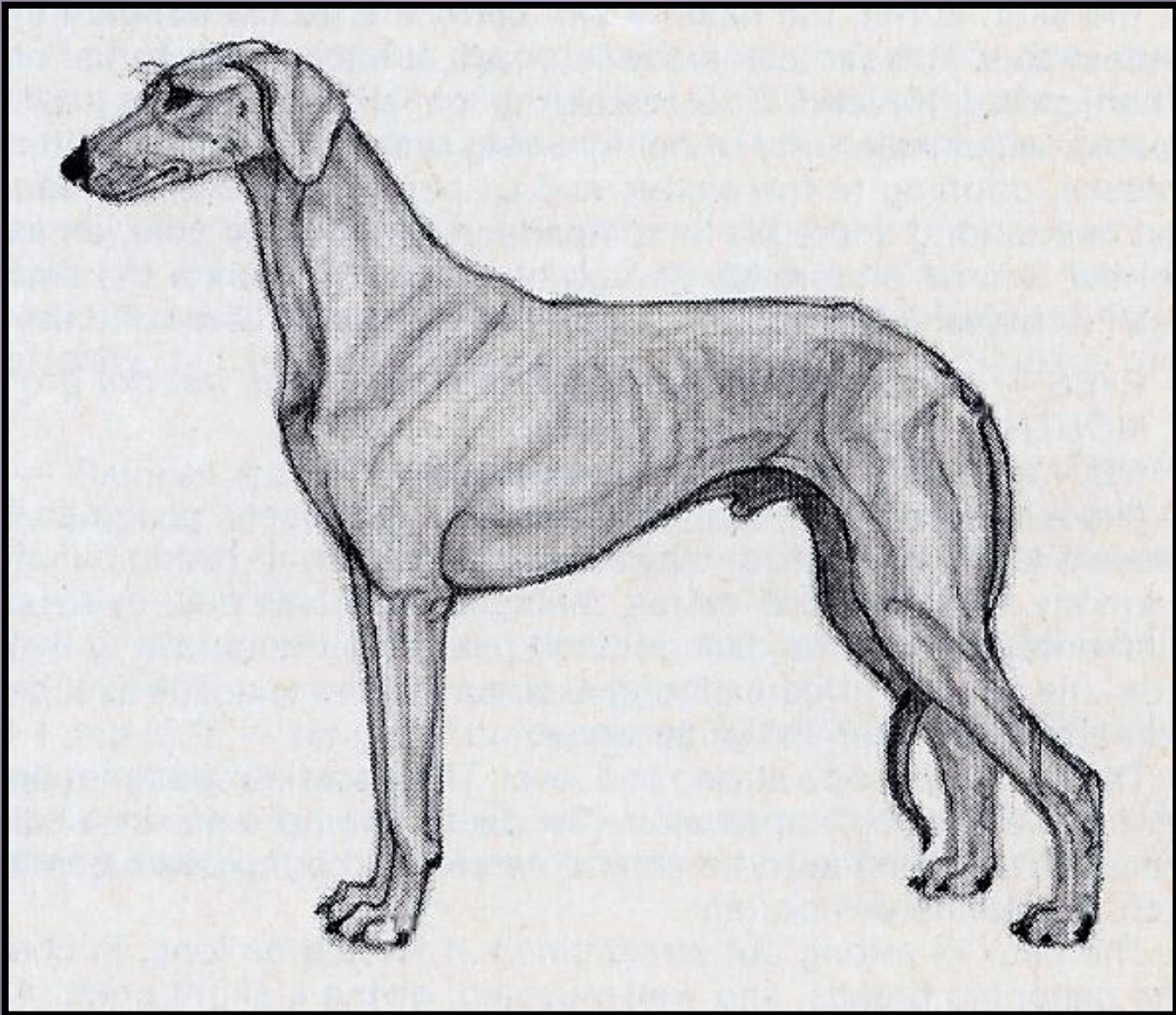


**Balanced structure**

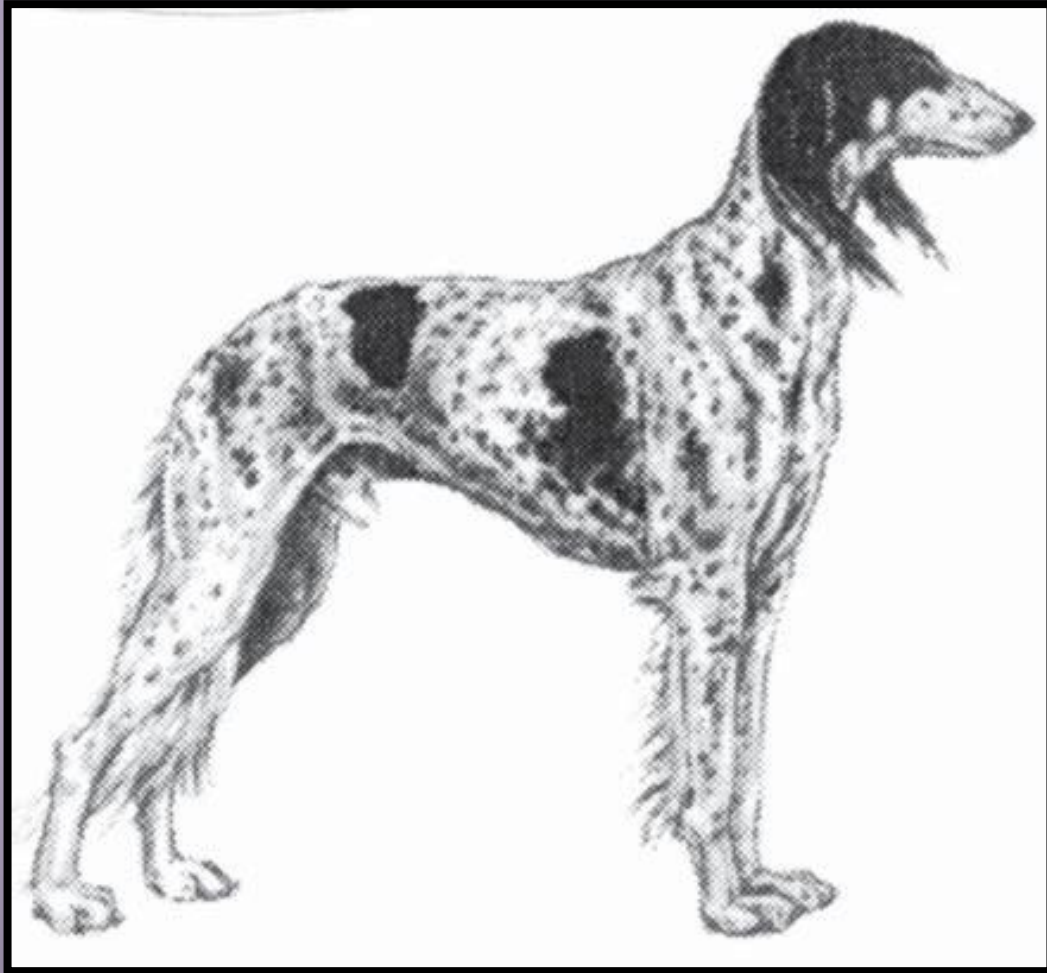




# Male of correct breed Type

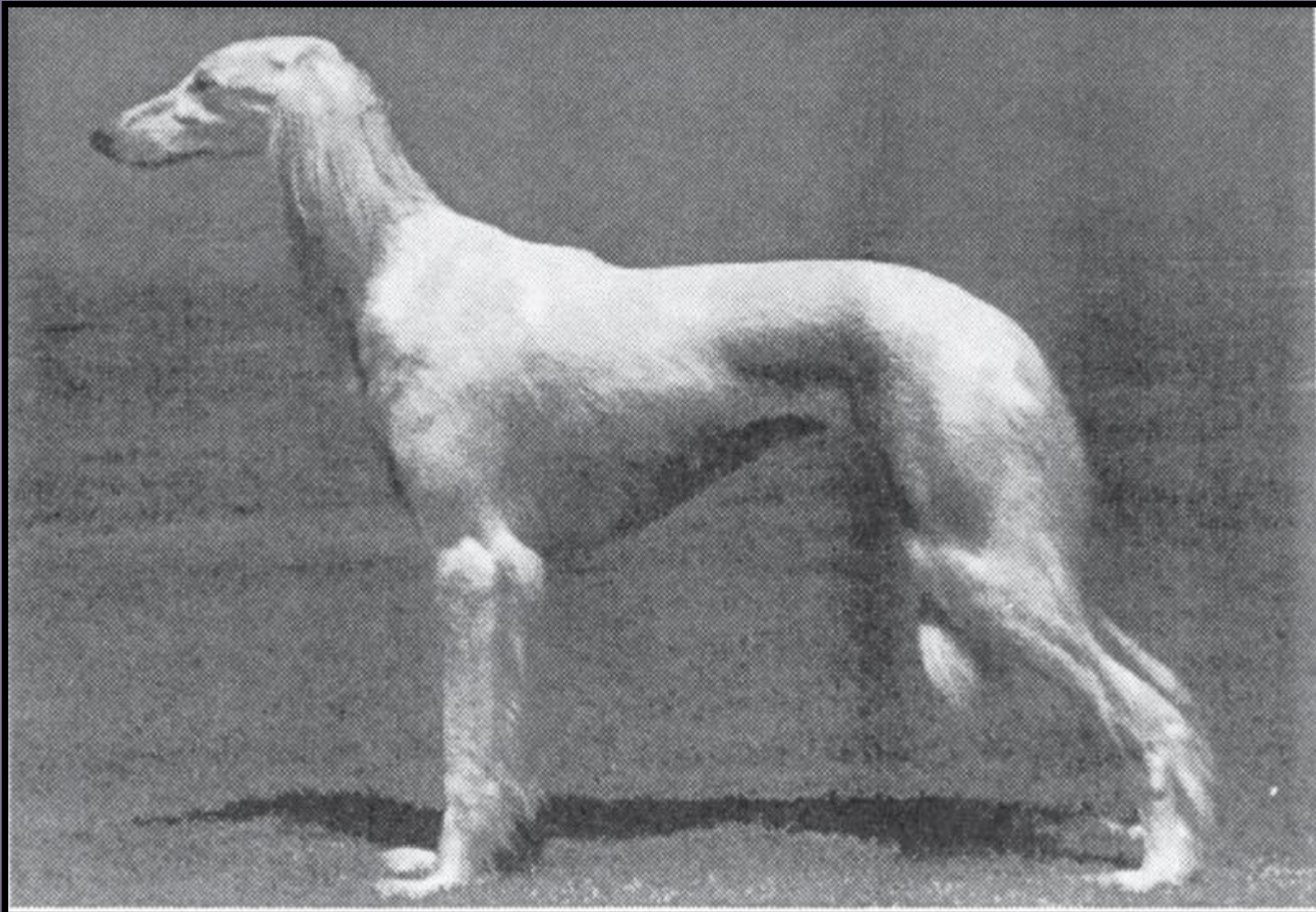


# Another correct Male





# Balance

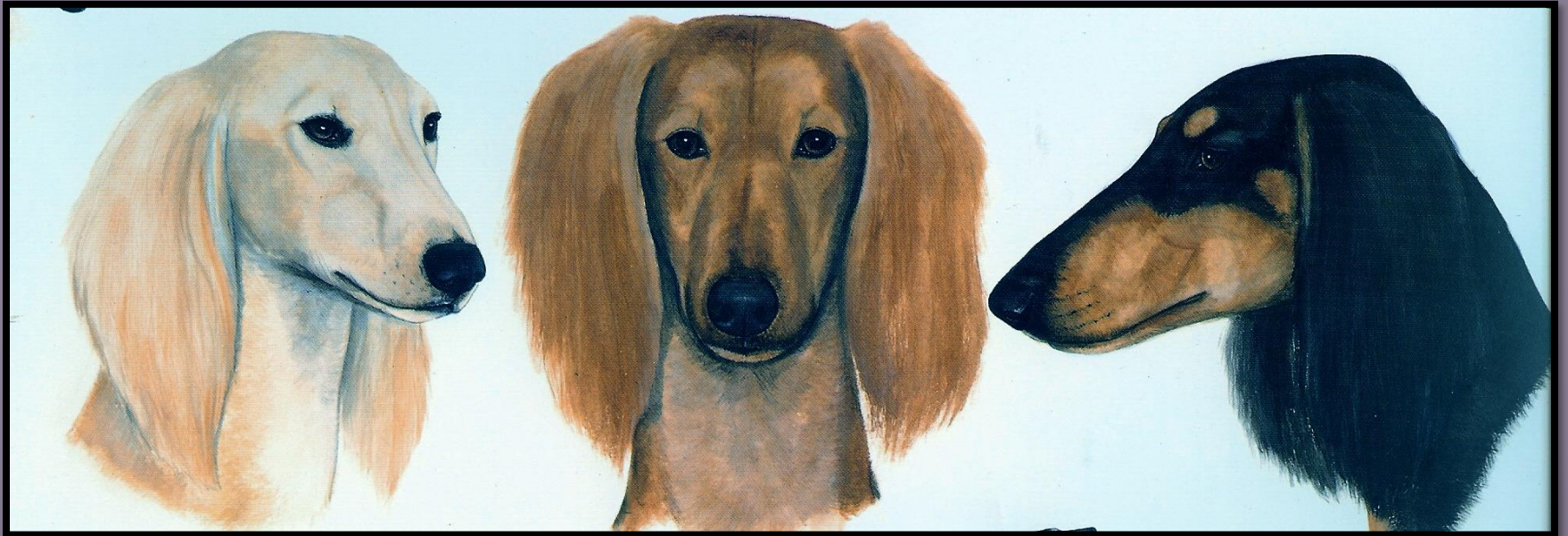


# **Correct head and expression**





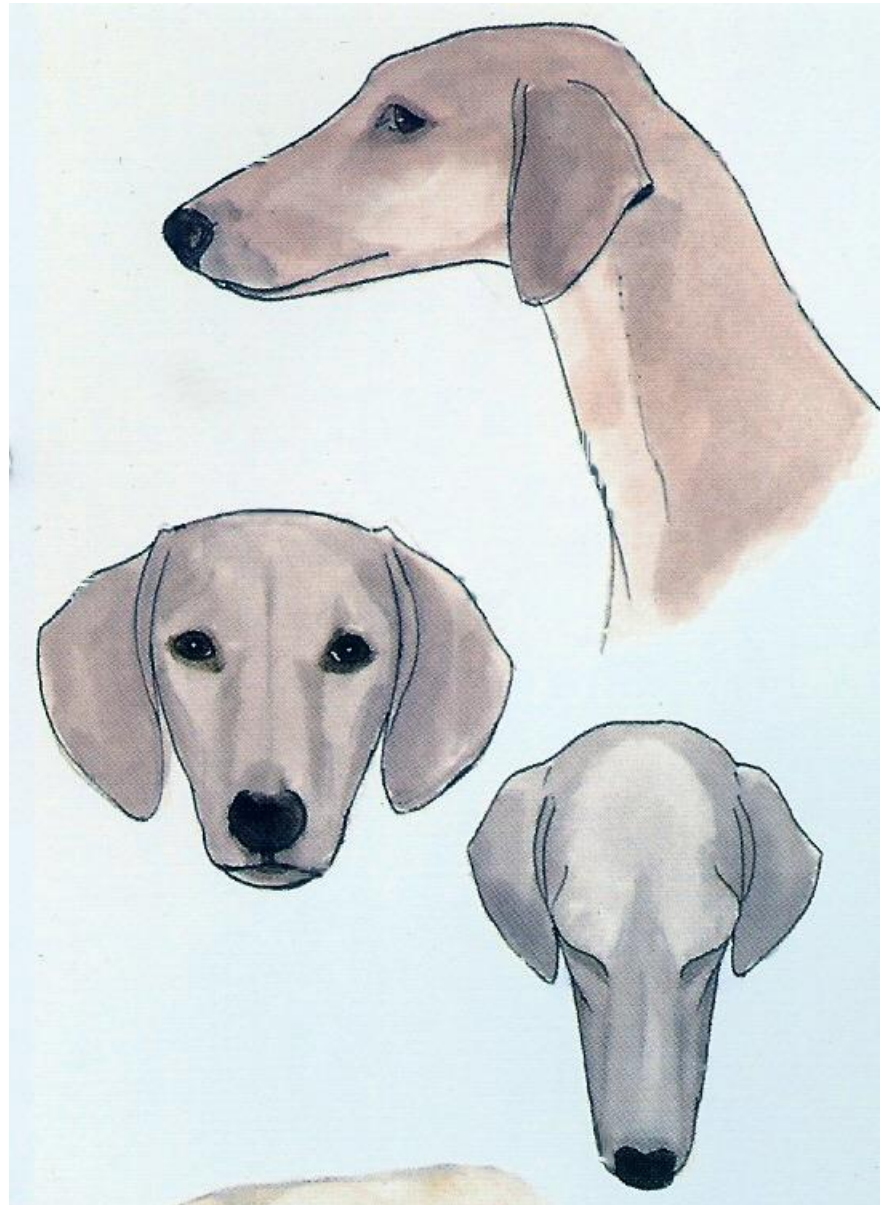
# Saluki Head Studies



# Head

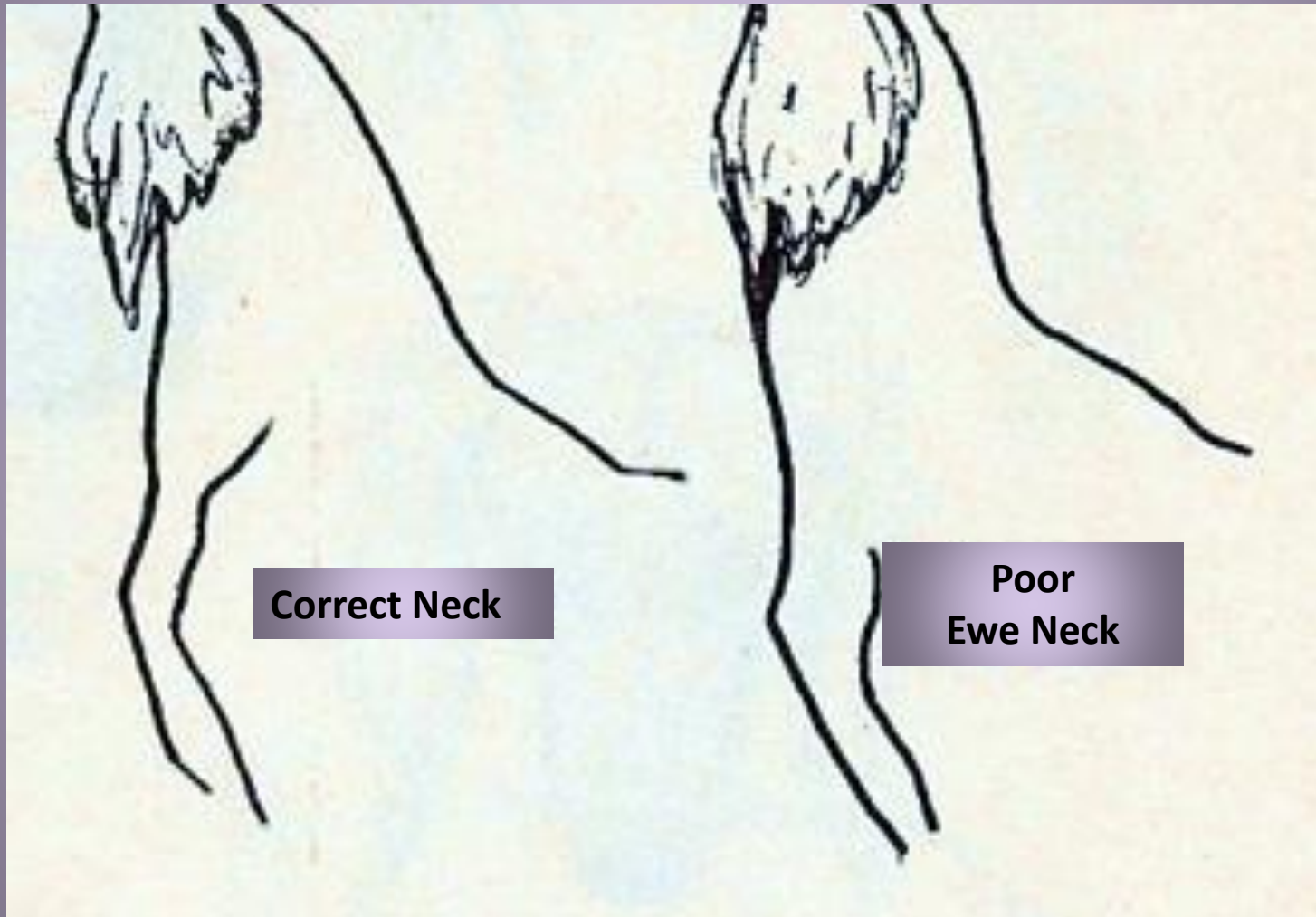
---

- Profile
- Front on
- Overhead View





# Neck

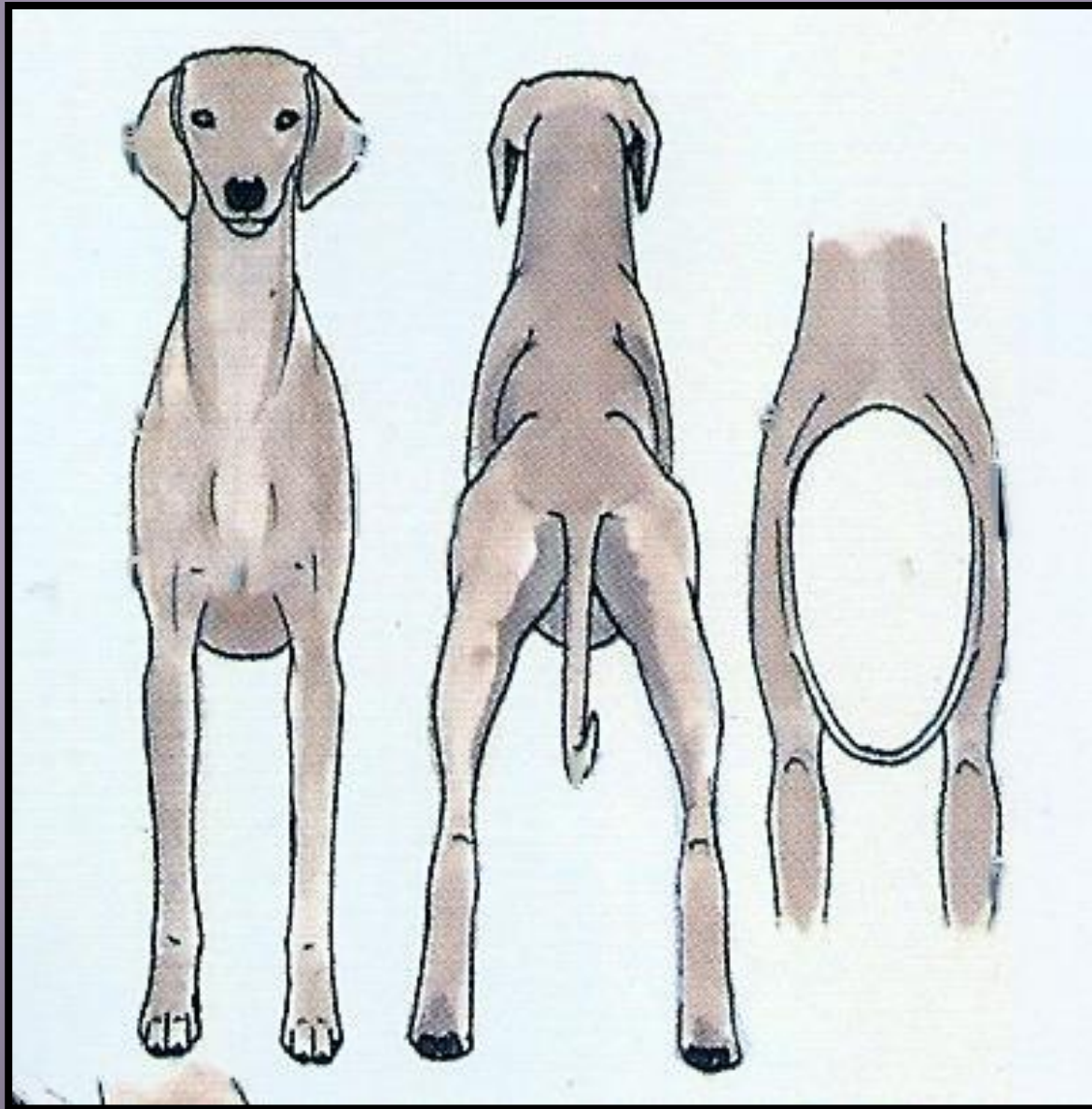




**Eye shape**



# Front, Rear and Ribcage shape

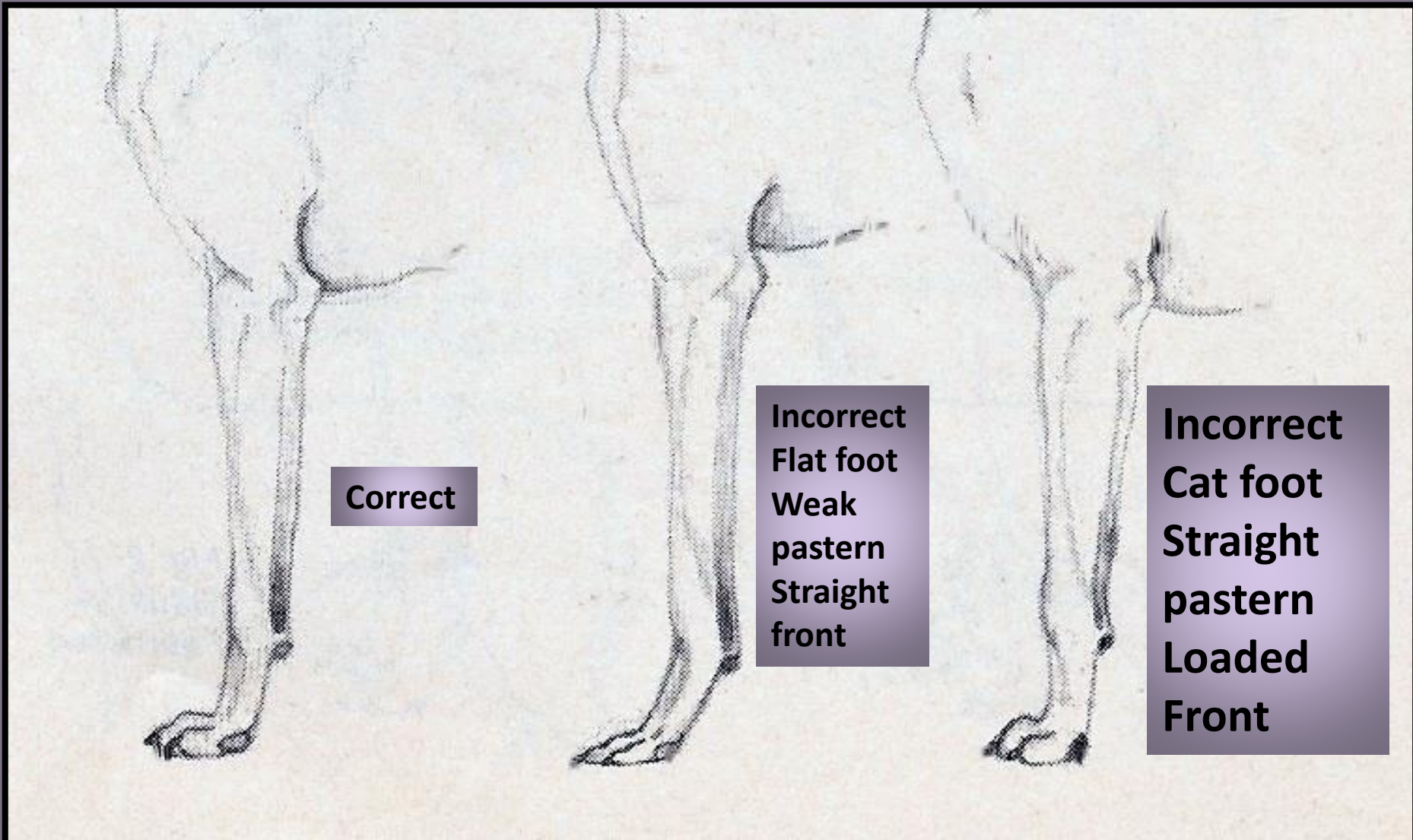




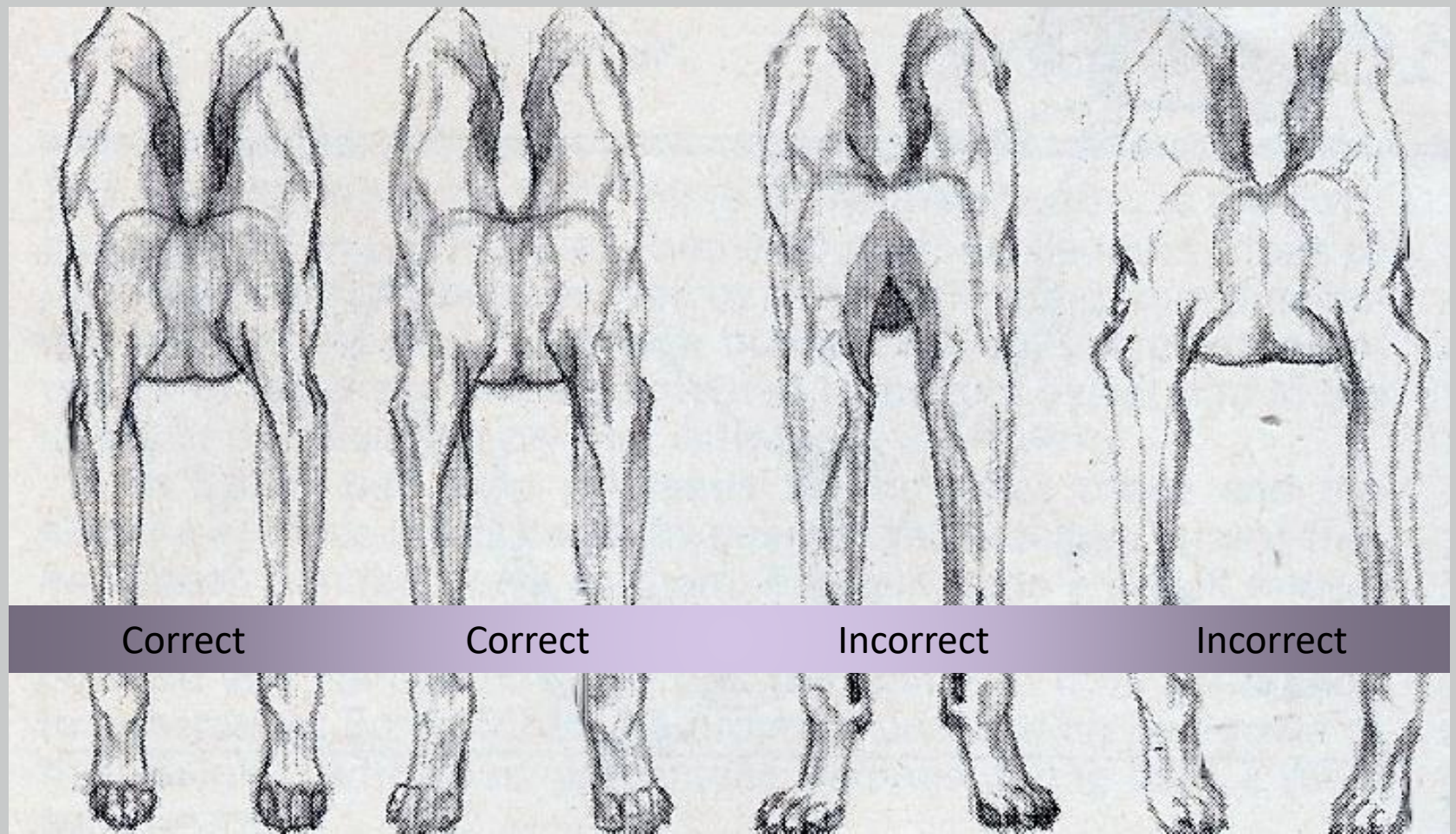
**Body, Topline,  
Hindquarters  
Lay back of  
pastern and neck  
into shoulder**



# Forequarters

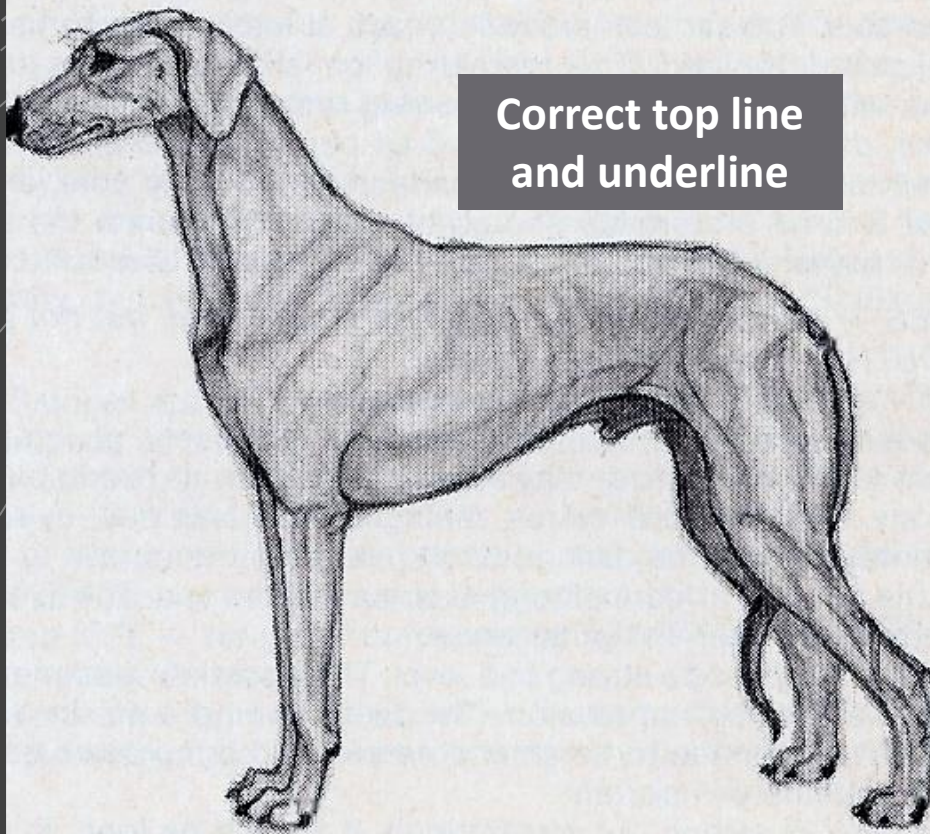






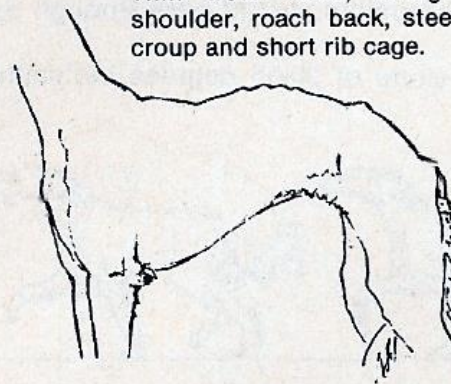
# Forequarters



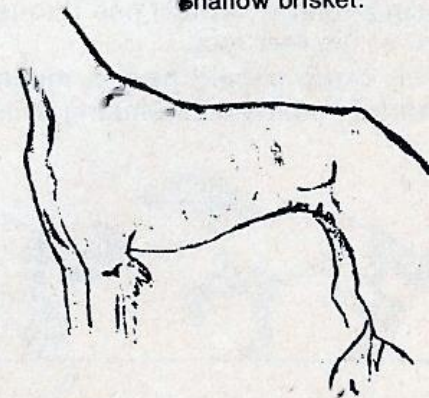


Correct top line  
and underline

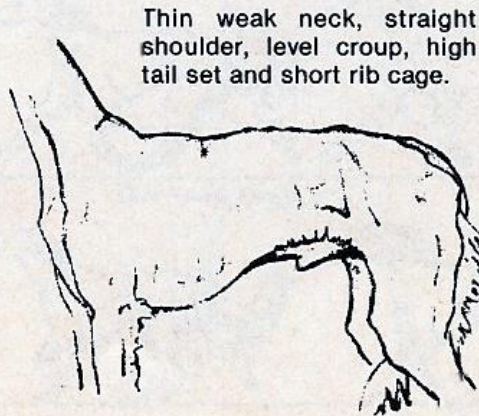
Thin weak neck, straight  
shoulder, roach back, steep  
croup and short rib cage.



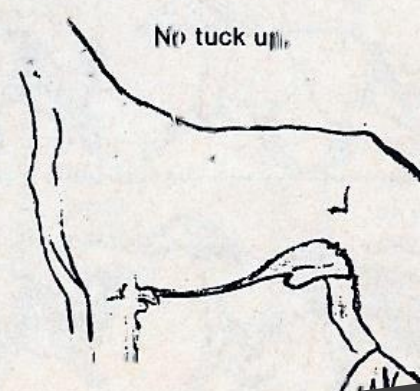
Shallow brisket.



Thin weak neck, straight  
shoulder, level croup, high  
tail set and short rib cage.



No tuck up.



# Top & Underlines

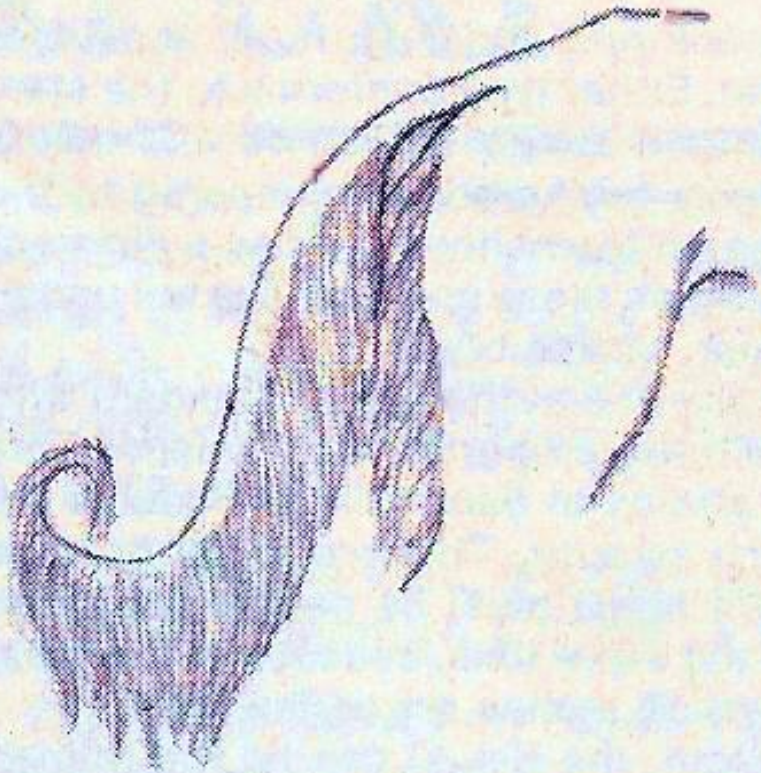


# Feet, pastern and Hindquarter

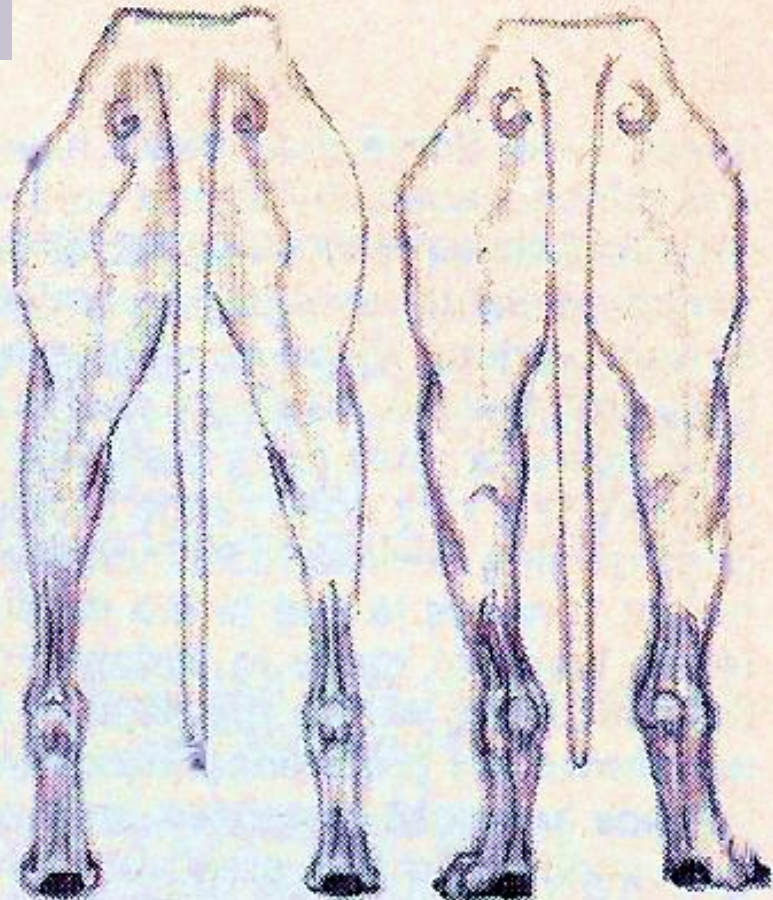


# Hindquarters

Correct Croup



Ideal tail set and carriage

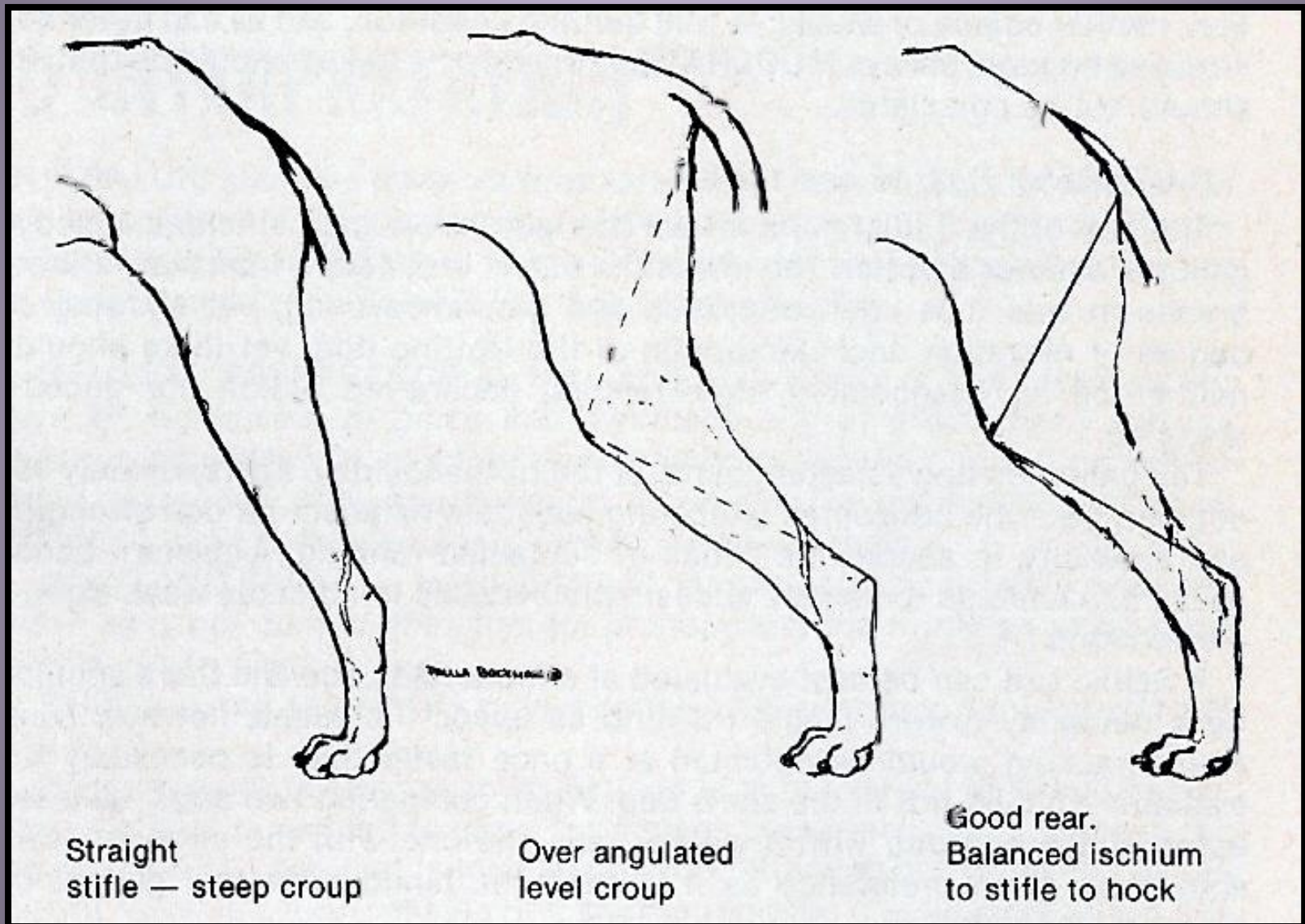


Proper distance  
Good rear

Poor rear  
close, hocking in



# Hindquarters

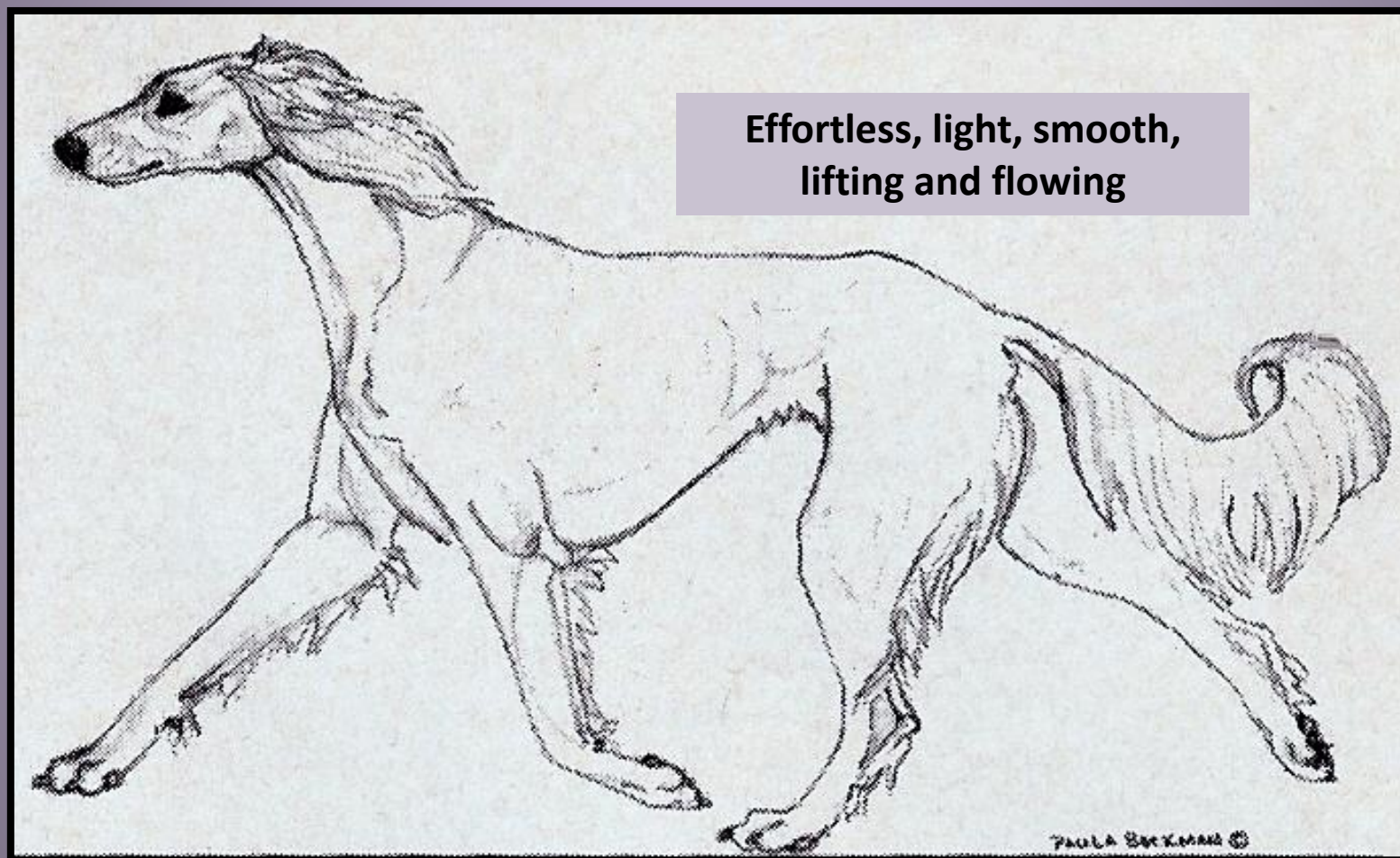


# Typical movement , head carriage Footfall, Tail Carriage

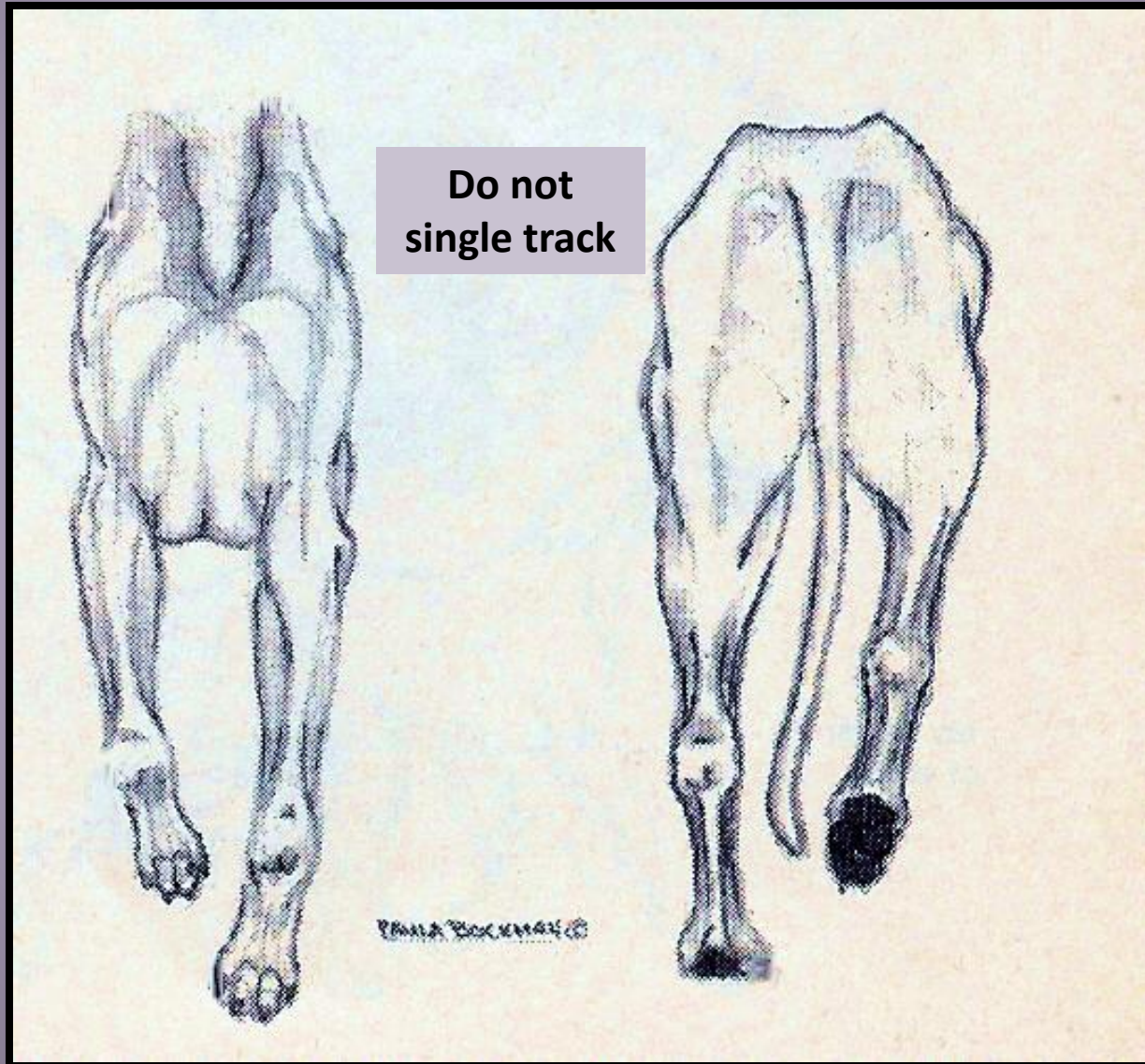




# Ideal Saluki Movement

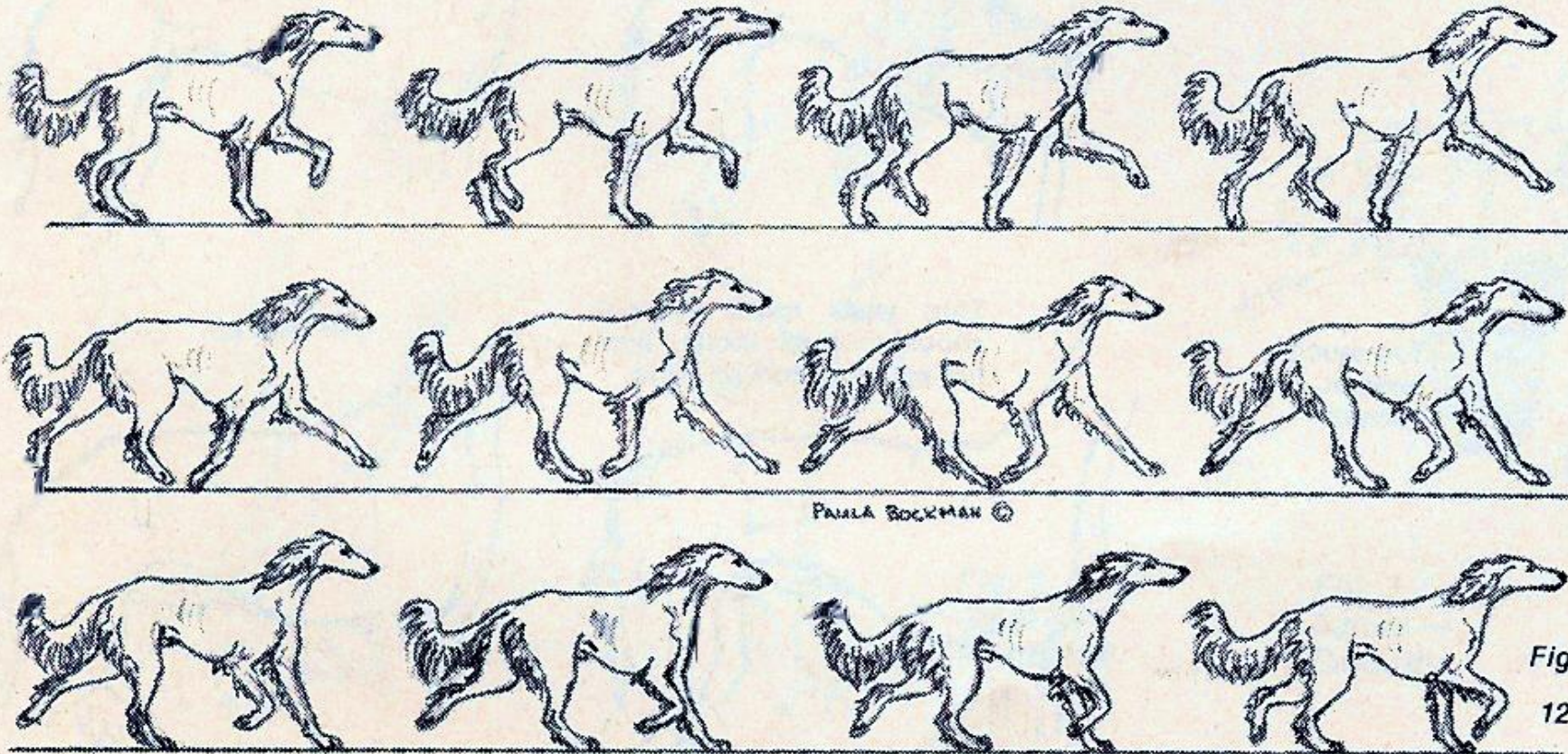


# Movement



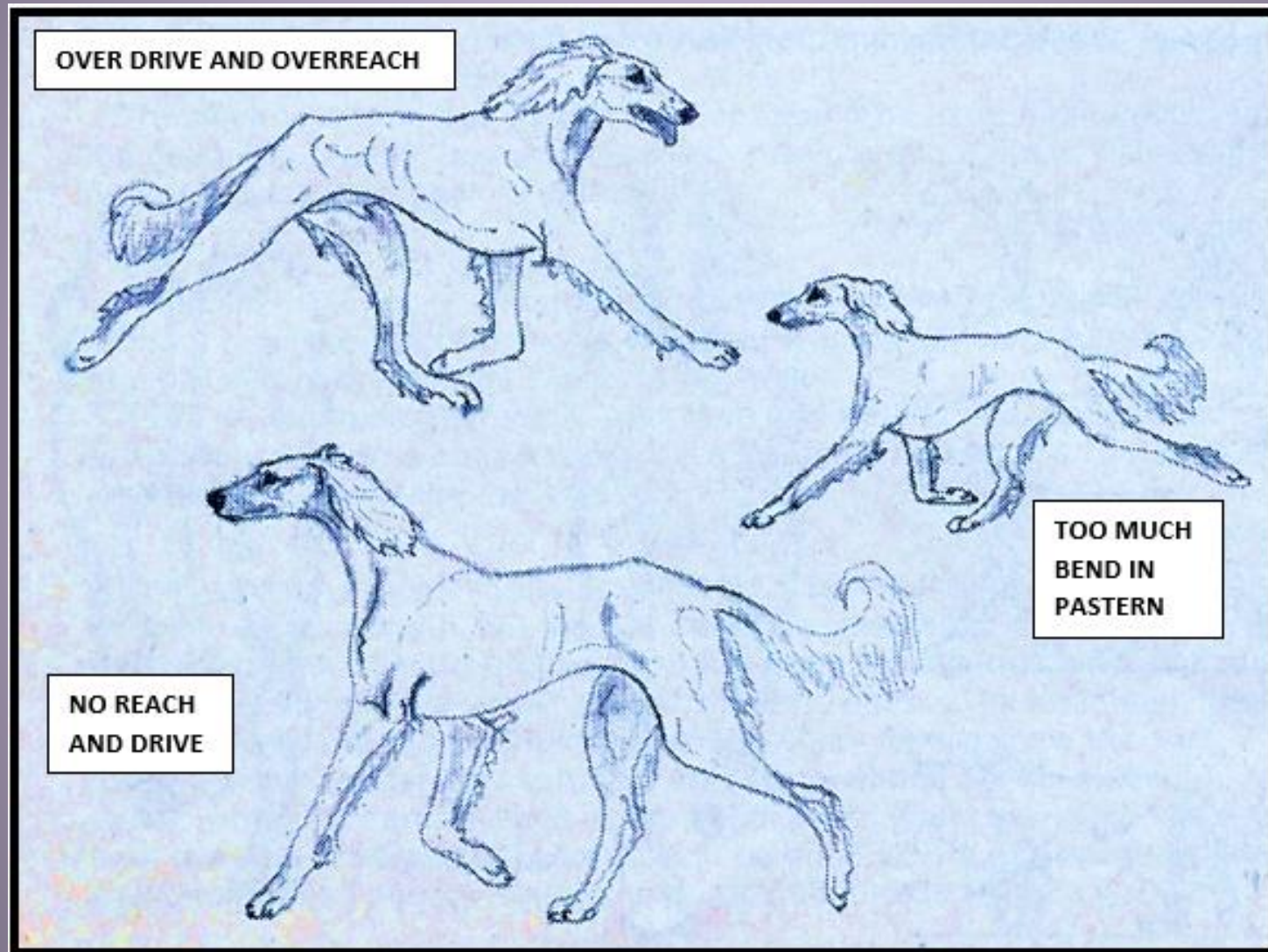


# Gait and Movement





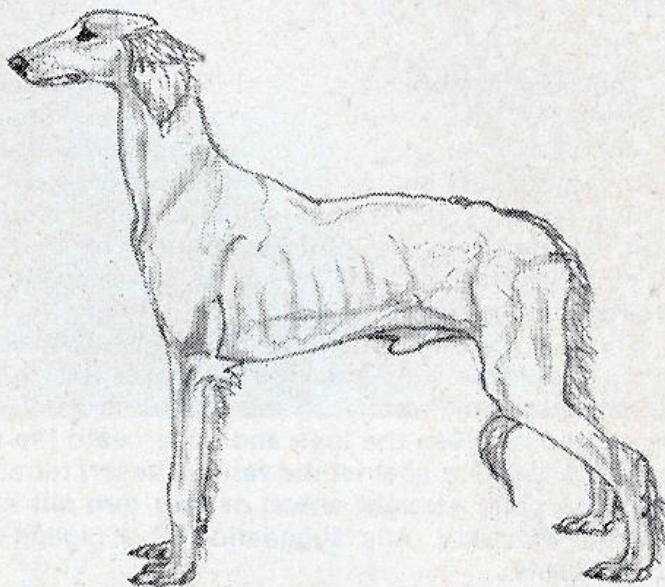
# Movement Faults





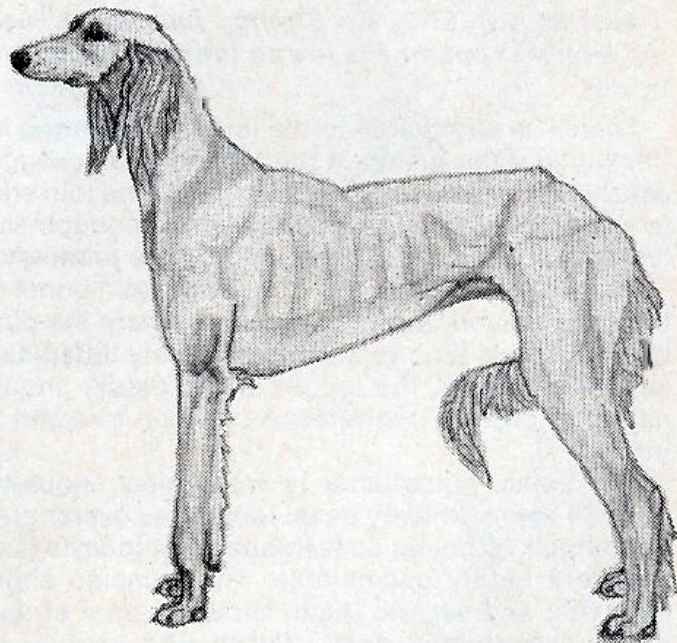
## COMMON FAULTS

Down faced ewe neck.  
Straight shoulder,  
straight upper arm,  
straight pasterns. Poor  
topline, no tuck up, level  
croup, over angulated  
rear, flat feet, short tail.



*Fig: 13*

Snipey jaw, domed skull,  
low ear set, straight  
shoulders, straight  
upper arm, straight  
pasterns, poor underline,  
poor topline, steep  
croup, straight rear  
angulation, high hocks,  
flat feet, cat feet.



# Common Saluki Faults

# Hallmarks of the Breed



- **Grace and symmetry**
- **Great speed and endurance**
- **Expression dignified**
- **Gentle, faithful, farseeing eyes**
- **Strength and activity**
- **Movement free and flowing**
- **Aristocratic**





**Many thanks to  
Paula Bockman Chato  
and the  
Late Maurice Le Cussans**